

CAST COVER SERIES HANDS ON®



**BEST IN
INDUSTRY
10 YEAR
UNLIMITED
WARRANTY**

PUSH BUTTON ACTIVATED HAND AND HAIR DRYERS

Excel Dryer's Hands On hand dryers boast a longstanding reputation for quality and reliability. Hands On hand dryers are engineered to provide twice the service-free life of other hand dryers and are backed by an industry best Ten Year Unlimited Warranty, including damage due to accidents, misuse or vandalism. All Hands On series models can be specified as hair dryers. Features and benefits include:

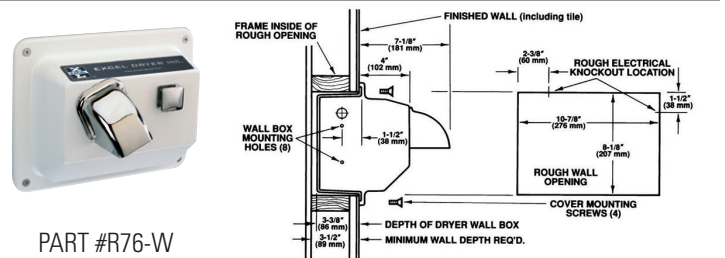
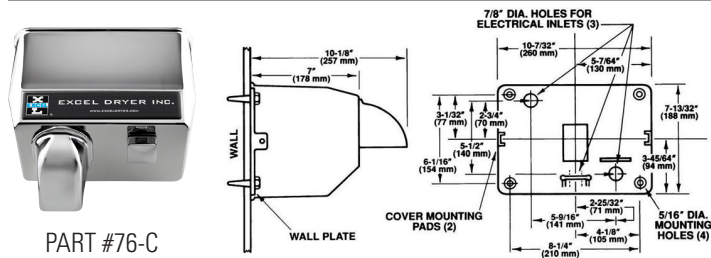
- ✓ Maintenance-free brushless motor, capacitor initiated for quick starts
- ✓ Air nozzle revolves a full 360 degrees providing easy hand and face drying
- ✓ Air nozzle can be fixed in a downward position by a simple on-sight adjustment
- ✓ Covers are available in either a white epoxy paint or a chrome-plated finish
- ✓ Custom colors also are available
- ✓ All Hands On model dryers can also be specified to serve as hair dryers, ideal for health clubs, locker-room facilities, resorts and private washrooms

HANDS ON® CAST COVER SERIES

PUSH BUTTON ACTIVATED HAND AND HAIR DRYERS



Part ID	Description	Finish	Time Cycle	List Price
HAND DRYERS				
76-W	Hands On, Surface-Mounted, Cast Cover	White Epoxy Paint	30 Seconds	\$550
76-C	Hands On, Surface-Mounted, Cast Cover	Chrome Plated	30 Seconds	\$650
R76-W	Hands On, Semi-Recessed, Cast Cover	White Epoxy Paint	30 Seconds	\$600
R76-C	Hands On, Semi-Recessed, Cast Cover	Chrome Plated	30 Seconds	\$700
HAIR DRYERS				
H76-W	Hands On, Surface-Mounted, Cast Cover	White Epoxy Paint	3 Minutes	\$550
H76-C	Hands On, Surface-Mounted, Cast Cover	Chrome Plated	3 Minutes	\$650
RH76-W	Hands On, Semi-Recessed, Cast Cover	White Epoxy Paint	3 Minutes	\$600
RH76-C	Hands On, Semi-Recessed, Cast Cover	Chrome Plated	3 Minutes	\$700



SURFACE MOUNTED SPECIFICATIONS

Width: 10 3/4" (273 mm)	Height: 8" (203 mm)
Depth: 7" (178 mm)	Weight: 17 lbs. (7.7 kgs.)

SUGGESTED MOUNTING HEIGHTS

From floor to bottom of dryer:

	HAND DRYER	HAIR DRYER
Men	40" (102 cm)	64" (163 cm)
Women	38" (97 cm)	58" (147 cm)
Teenagers	36" (91 cm)	56" (142 cm)
Small Children	30" (76 cm)	43" (109 cm)
Handicapped	32" (81 cm)	45" (114 cm)

CONSTRUCTION

- Dryer cover shall be one-piece, heavy-duty, rib-reinforced die-cast zinc alloy. It shall be lightweight, unbreakable, rust-proof, fitted with a chrome plated die-cast zinc alloy push button, a fixed or 360° revolving die-cast, chrome plated, zinc alloy nozzle.
- All exposed surfaces shall be bright chrome plated or finished with chip-proof, electrostatically applied epoxy paint.
- Surface-mounted covers shall be fastened by two flat head, recessed tamper-proof bolts to a cast zinc alloy wall pallet and shall be equipped with three (3) 7/8" (22mm) diameter holes, one of which shall be suitable for use with surface conduit. Recessed covers shall be fastened by four flat-head recessed, tamper-proof bolts to wall box and shall be equipped with two (2) 7/8" (22mm) diameter holes for ease of wiring. Wall plate shall be fastened to wall box by four concealed 1/4" (6mm) mounting bolts.
- Cover shall be equipped with an air inlet opening on the bottom of the casting and covered with a vandal resistant metal protective grill to prevent the entry of foreign objects. A chrome plated air outlet nozzle on the front of the cover shall permit a full flow of warm air when in operation, and shall be protected by a cast alloy grating fixed into the blower housing.
- All internal parts shall be coated according to Underwriters' Laboratories, Inc. requirements.
- Entire mechanism shall be internally grounded.

RECESSED MOUNTED SPECIFICATIONS

Width: 12 1/2" (318 mm)	Height: 9 3/4" (248 mm)
Depth: 4" (102 mm)	Weight: 18 lbs. (8.1 kgs.)

ELECTRICAL

Units are available as specified in:

110-120V	15A or 20A	60 Hz
208-230V	10A	60 Hz
277V	8A	60 Hz
220-240V	10A	50 Hz



MECHANISM

- Motor shall be capacitor-initiated, brushless type (for longer life and quiet operation) 1/10 hp, 3450 rpm with self-lubricated bearings. It shall be insulated by a resilient mounting and shall be protected by a self-resetting thermal protector. For 50 hz applications, motor shall be a universal 1/10 hp, 4200 rpm at rated load, with sealed lubricated ball bearings. Motor shall be insulated by resilient mounting and is thermally protected.
- Fan shall be a large, single inlet centrifugal type for maximum capacity, and shall deliver 150 cfm. Fan shall be mounted directly on the motor shaft, and fan and motor unit shall be insulated from dryer with a resilient rubber mounting to obtain maximum dampening effect.
- The heating element is constructed of Nichrome wire and side mounted on the blower housing, thereby being vandal proof. It shall be protected by an automatic resetting thermostat which shall open whenever air flow is cut off and shall close when flow of air is resumed. The element shall produce an air temperature of 145°F/63°C at a 72°F/22°C ambient room temperature at the outlet.
- The timer is a state of the art electronic device with an adjustable time cycle. For hand dryers, timers are set at 30 seconds and at 3 minutes for hair drying.

UNLIMITED WARRANTY

All parts on Hand and Hair Dryers shall be warranted against defective material and/or workmanship for a period of ten years. Warranty shall include labor performed at factory as well as the repair or exchange of defective parts at manufacturer's option, and shall include damage due to accidents, misuse or vandalism.



TIME TO THROW IN THE TOWEL®

EXCEL DRYER INC • 1.800.255.9235 • EXCELDRYER.COM

JUNE 2016

16EDS0058